

AiM Racing Products 2015



For Pricing and Inquiries Please Contact:

Achilles Motorsports, Inc.
5636 W. San Madele Ave
Fresno, CA 93722
info@achillesmotorsports.com
P. (559)276-5715
F. (559)276-5719

www.achillesmotorsports.com/aim



AiM Racing Products 2015



For Pricing and Inquiries Please Contact:

Achilles Motorsports, Inc.
5636 W. San Madele Ave
Fresno, CA 93722
info@achillesmotorsports.com
P. (559)276-5715
F. (559)276-5719

www.achillesmotorsports.com/aim



AiM Racing Products

Welcome

In Our World.

06	MXL2	Dash Logger
12	MXG	Dash Logger
18	MXS	Dash Logger
22	EVO5	Logger
24	EVO4	Logger
26	Solo/SoloDL	GPS Lap Times
30	SmartyCam HD Rev.2	Videocamera

36	SmartyCam GP HD	Videocamera
38	G-Dash	Display
42	Formula SW2	Steering Wheel
44	GT320 SW	Steering Wheel
45	GT350 SW	Steering Wheel
48	GPS05 Module	Accessories
50	LCU-One	Accessories

52	Memory Module	Accessories
53	Channel Expansion	Accessories
54	ECU Bridge	Bridge
55	RPM Bridge	Bridge
56	TC Hub	Accessories

For Pricing and Inquiries Please Contact:

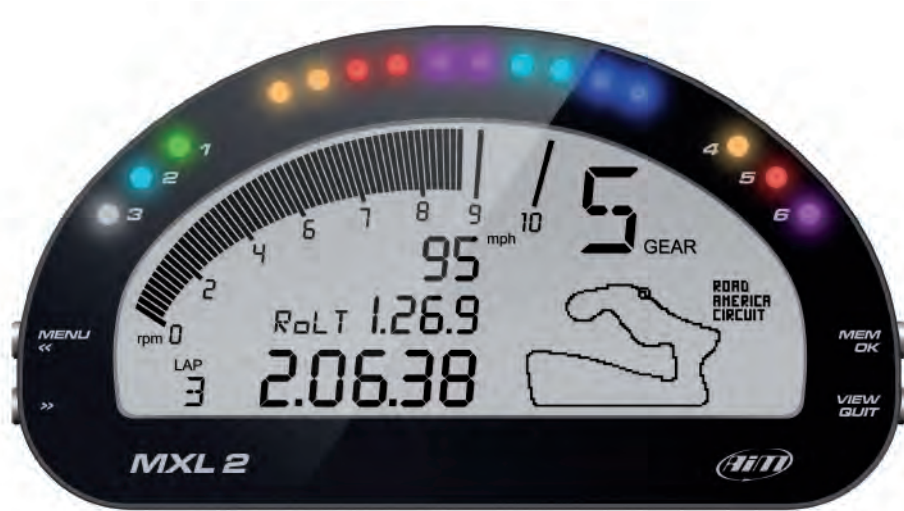
Achilles Motorsports, Inc.
5636 W. San Madele Ave
Fresno, CA 93722

iii SUZ[~V_ afadbadfa_ !S_
; Xa2SUZ[~V_ afadbadfa_
Bz/ ' +f(\$) (Z) #'
8z/ ' +f(\$) (Z) #+



MXL2

The New Dash Logger for Motorsports



The new MXL2 features:

- An all new high contrast LCD with an integrated graphical portion
- A dual color backlight
- Six configurable RGB alarm LEDs
- A 10 RGB LED shift light array
- WiFi connectivity
- Three CAN connections
- Connections with industry leading 500+ ECUs
- A 3-axis accelerometer + gyroscope

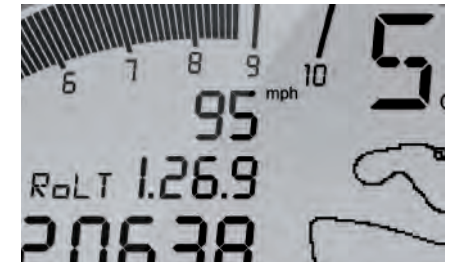
- 8 analog inputs at a max 1000 Hz each
- 4 digital speed inputs
- Coil RPM input
- A lap signal input
- 2 digital outputs
- Realtime fully configurable math channels

All this is housed in a waterproof aluminum chassis with sealed side mounted aluminum buttons for quick easy interaction.

Sharp Liquid Crystal

The MXL2 display features a high contrast traditional LCD, with a black to white ratio nearly double its predecessor, fused with a graphical LCD offering great flexibility in information display and alerts.

The MXL2 now offers a dual colored backlight of high contrast white and red which can also be changed conditionally. An ambient light sensor keeps the backlight at optimum brightness levels.



Flexible Alarms

Six configurable RGB alarm LEDs. You choose the conditions, you choose the colors. Select a solid alarm - or flashing one - and the flashing frequency, choose to have an accompanying text message, and set the alarm priorities.



Integrated Shift Light Array

An integrated shift light is a hallmark of the MXL, but an even better 10 LED shift light array is found in the MXL2. Choose from a host of advanced multicolored RGB shift light patterns that can be customized to your liking, and for each unique gear when required.





For Pricing and Inquiries Please Contact:

Achilles Motorsports, Inc.
5636 W. San Madele Ave
Fresno, CA 93722

!!! SUZUKI afadbafeh_!S_
; Xa2SUZUKI afadbafeh_
Bz' ' +f\$) (Z) #'
8z' ' +f\$) (Z) #+



WiFi Connectivity

Configure, calibrate, and download your data wirelessly over a secure 802.11 WiFi connection.

Motorsport Connectors

Lightweight aluminum mil-spec motorsport connectors are standard on the MXG.



RaceStudio3, the almighty software

RaceStudio3 is the heart of your MXL2, as it will manage all your activities related to:

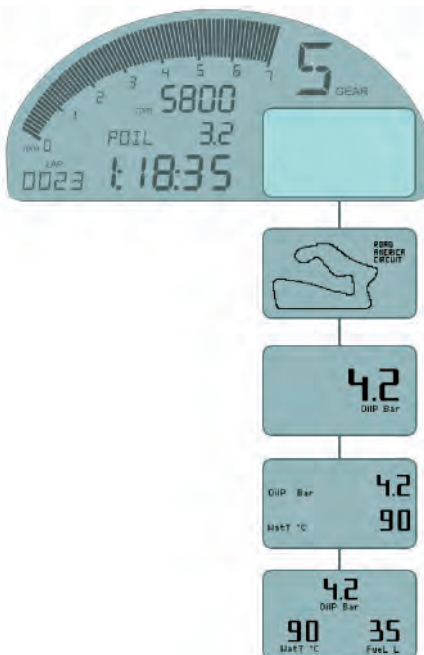
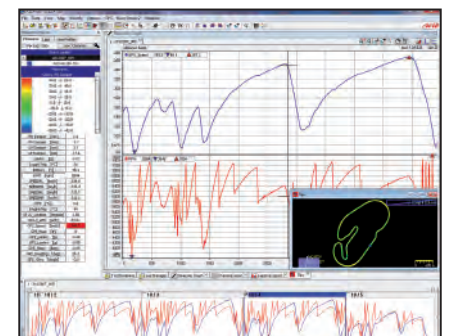
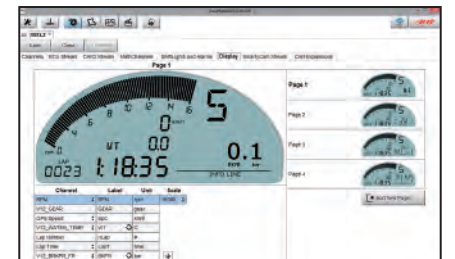
Configuration

With Race Studio 3 you can create, modify, delete, import and export configurations with all channels, ECU drivers, Math channels, Display Pages, Digital outputs, Alarms, Shift Lights and all the expansions you need.

You will also be able to manage the map of all your racing tracks and compare two laps watching the video recorded by Smarty-Cam cameras.

Analysis

With RaceStudio3 you can also analyse all data recorded by MXL2 and downloaded to your PC: graphs, histograms and tables will help you study your performance, providing an objective support to avoid mistakes and improve performances.

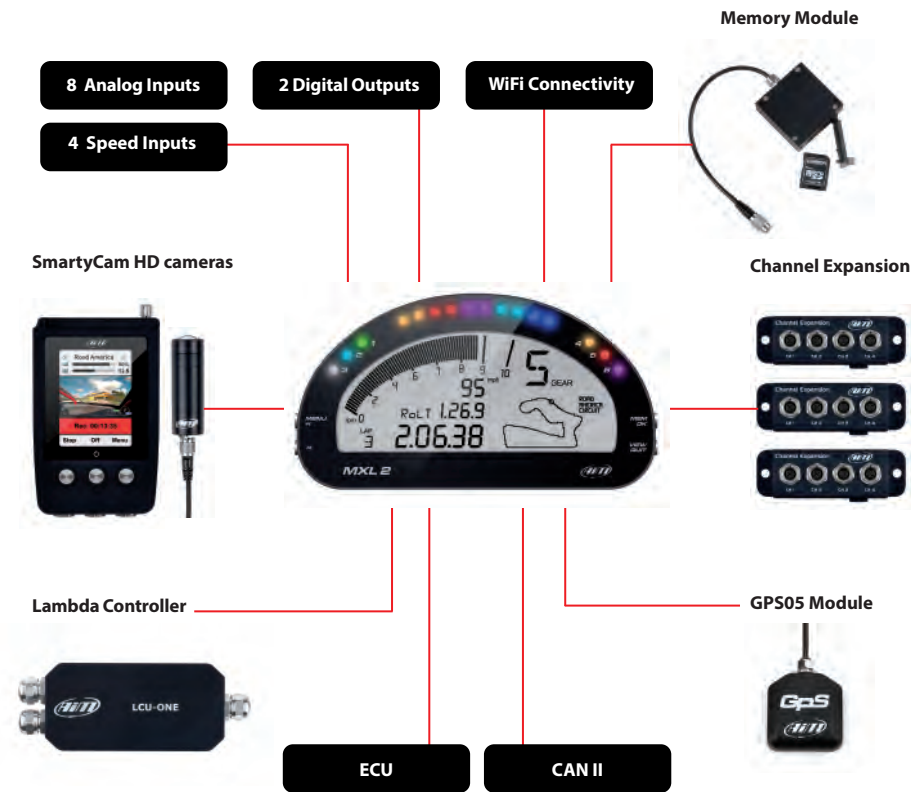


Freely configurable pages

You can define up to eight different custom pages, choosing among a wide library of page styles, defining which data to be shown, their end of scale and measure units.

MXL2

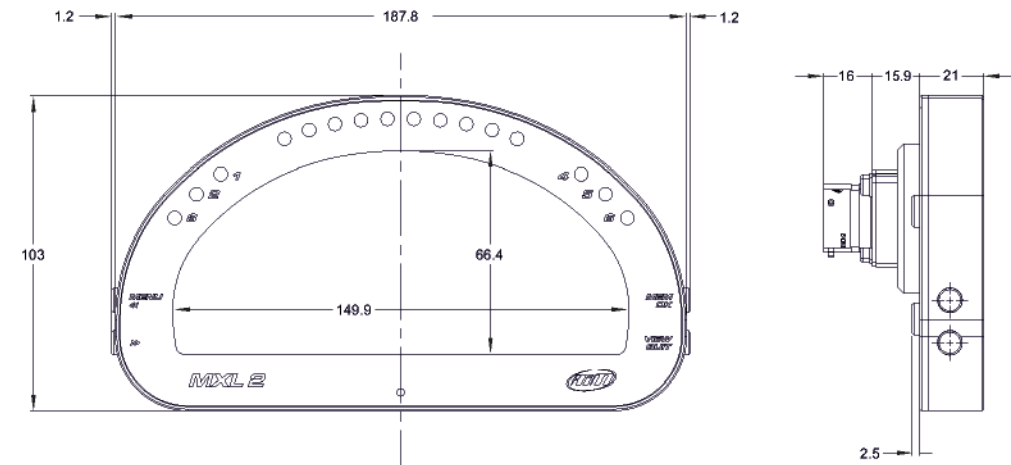
A Modular Data Acquisition Display System for your Car



Modular Data Acquisition System

Add expansion modules via our built in CAN bus eg. GPS, external memory modules, channel expansions, lambda controllers.

These are only some of the items that can be added to our MXL range for incrementing the performance and the data acquisition.



- Display	LCD display + graphical portion
- CAN connections	3
- ECU connections	CAN, RS232 or OBDII
- External modules connection	Yes
- Expansion CAN connection	GPS, Channel expansion, Lambda Controller, SmartyCam HD
- Analog inputs	8
- Digital inputs	4 Speed inputs, 1 RPM input, lap signal
- Connectors	2 Autosport connectors
- Accelerometer + gyroscope	Internal Three-axial $\pm 5G$
- Internal memory	4 GB
- Alarm LEDs	6 RGB freely configurable
- Shift Lights	10 RGB LEDs freely configurable
- Backlight	Bicolor white or red
- Light sensor	Yes
- Body	Anodized Aluminum
- Pushbuttons	Metallic

- Dimensions	187,8x103x21mm
- Weight	530g
- Waterproof	IP65

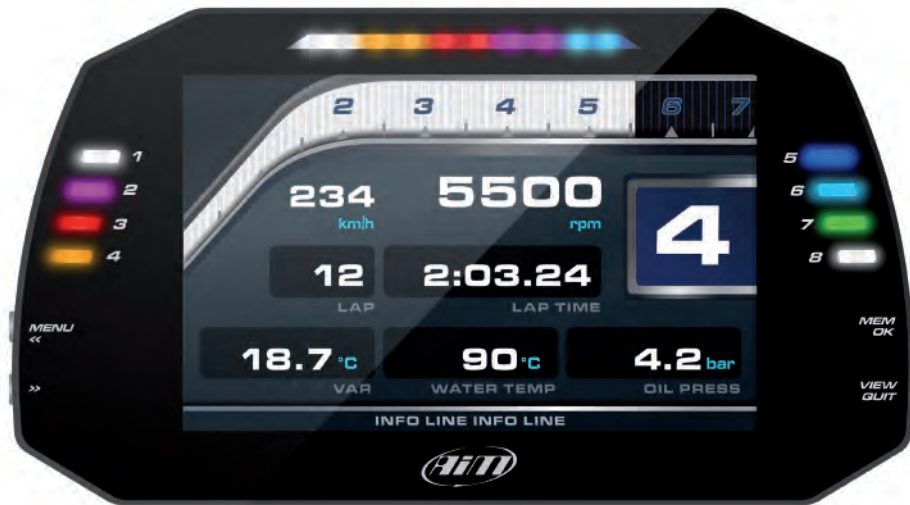
MXG

The New Extra Wide Dash Logger
for Motorsports

For Pricing and Inquiries Please Contact:

Achilles Motorsports, Inc.
5636 W. San Madele Ave
Fresno, CA 93722

i i i SUZ[^V_ afadbfz_h_ !S_
; Xa2SUZ[^V_ afadbfz_h_
Bz' ' +f(\$) (Ž) #
8z' ' +f(\$) (Ž) #+



- Extra wide 7" TFT High Contrast 1100 lumen TFT Display
- Fully user configurable
- Eight configurable RGB alarm LEDs
- A 10 RGB LED shift light array
- WiFi connectivity
- Three CAN connections
- Connections with industry leading 500+ ECUs
- A 3-axis accelerometer + gyroscope
- 8 analog inputs at a max 1000 Hz each

- 4 digital speed inputs
- Coil RPM input
- A lap signal input
- 2 digital outputs
- Realtime fully configurable math channels

All this is housed in a waterproof aluminum chassis with sealed side mounted aluminum buttons for quick easy interaction.

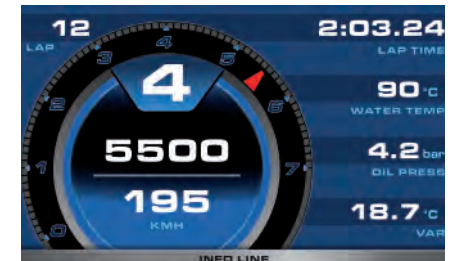
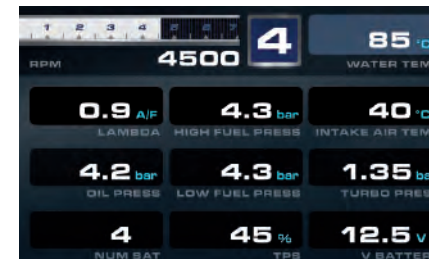
Extra Wide, High Contrast 7" TFT Display

The MXG display features a high contrast 7" TFT Display, fully configurable by a dedicated software.

You can create as many pages as wished, showing in different fonts and dimensions every information received by MXG, as well as math channels.

Swapping between pages can be managed pushing one or two pushbuttons.

An ambient light sensor keeps the backlight at optimum brightness levels.



For Pricing and Inquiries Please Contact:

Achilles Motorsports, Inc.
5636 W. San Madele Ave
Fresno, CA 93722

!!! SUZUKI afadbadfella !S_
2 SUZUKI afadbadfella
Bz/ ' +f(\$) (Z) #'
8z/ ' +f(\$) (Z) #+



Flexible Alarms

Eight configurable RGB alarm LEDs. You choose the conditions, you choose the colors. Select a solid alarm - or flashing one - and the flashing frequency, choose to have an accompanying text message, and set the alarm priorities.



Integrated Shift Light Array

Choose from a host of advanced multicoloured RGB shift light patterns that can be customized to your liking, and for each unique gear when required.

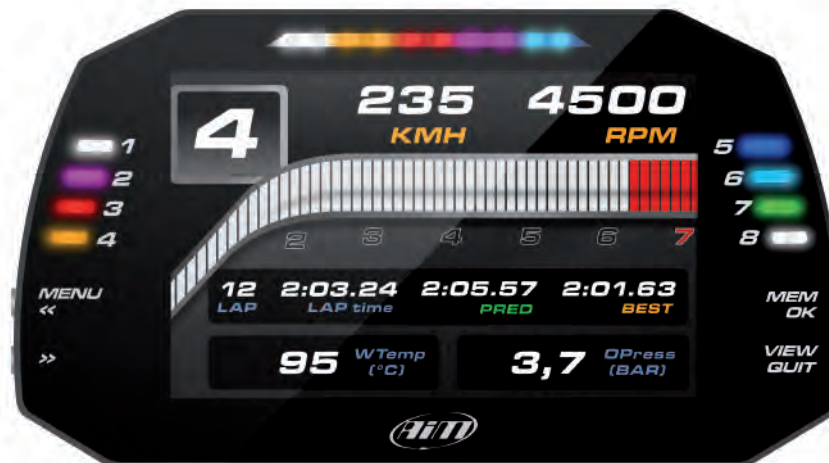
WiFi Connectivity

Configure, calibrate, and download your data wirelessly over a secure 802.11 WiFi connection.



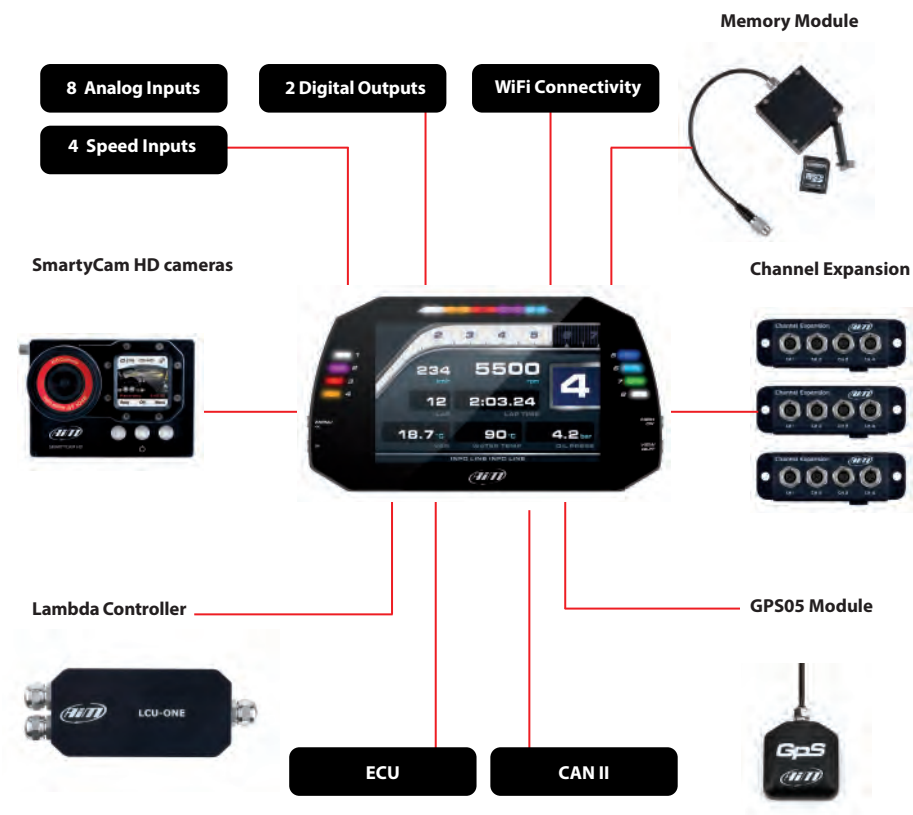
Motorsport Connectors

Lightweight aluminum mil-spec motorsport connectors are standard on the MXG.



MXG

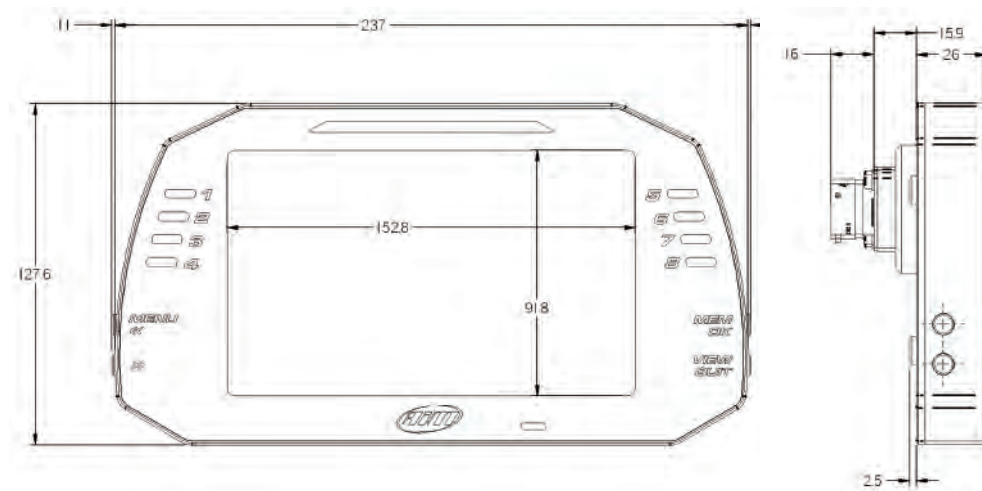
A Modular Data Acquisition Display System for your car



Modular Data Acquisition System

Add expansion modules via our built in CAN bus eg. GPS, external memory modules, channel expansions, lambda controllers.

These are only some of the items that can be added to our MXG range for incrementing the performance and the data acquired.



- Display	7" TFT
- N. Pixel	800x480
- Contrast	1000:1
- Brightness	700cd/m2
- Light sensor	Yes
- Alarm LEDs	8 RGB freely configurable
- Shift Lights	10 RGB LEDs freely configurable
- CAN connections	3
- ECU connections	CAN, RS232 or K-line
- External modules connection	Yes
- Expansion CAN connection	GPS, Channel expansion, Lambda Controller, SmartyCam HD
- Analog inputs	8 fully configurable
- Digital inputs	4 Speed inputs, 1 RPM input, lap signal
- Connectors	2 Motorsport connectors
- Accelerometer + gyroscope	Internal Three-axial $\pm 5G$ +Gyro
- Internal memory	4 GB
- Body	Anodized Aluminum
- Pushbuttons	Metallic
- Dimensions	237x127,6x26mm
- Weight	950g
- Waterproof	IP65

MXS

The New Compact Dash Logger 5" TFT Display for Motorsports



- Compact 5" TFT High Contrast TFT Display
- Fully user configurable
- 6 configurable RGB alarm LEDs
- A 10 RGB LED shift light array
- WiFi connectivity
- Three CAN connections
- Connections with industry leading 700+ ECUs
- A 3-axis accelerometer + gyroscope
- 8 analog inputs at a max 1000 Hz each

- 4 digital speed inputs
- Coil RPM input
- A lap signal input
- 2 digital outputs
- Realtime fully configurable math channels

All this is housed in a waterproof aluminum chassis with sealed side mounted aluminum buttons for quick easy interaction.

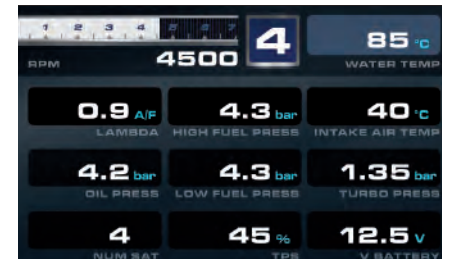
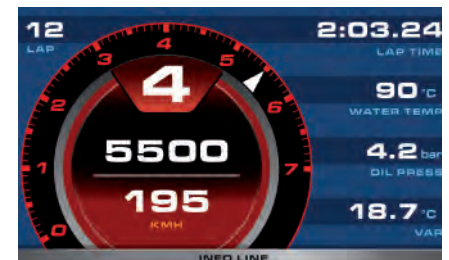
Compact, High Contrast 5" TFT Display

The MXS display features a high contrast 5" TFT Display, fully configurable by a dedicated software.

You can create as many pages as wished, showing in different fonts and dimensions every information received by MXS, as well as math channels.

Swapping between pages can be managed pushing one or two pushbuttons.

An ambient light sensor keeps the backlight at optimum brightness levels.



For Pricing and Inquiries Please Contact:

Achilles Motorsports, Inc.
5636 W. San Madele Ave
Fresno, CA 93722

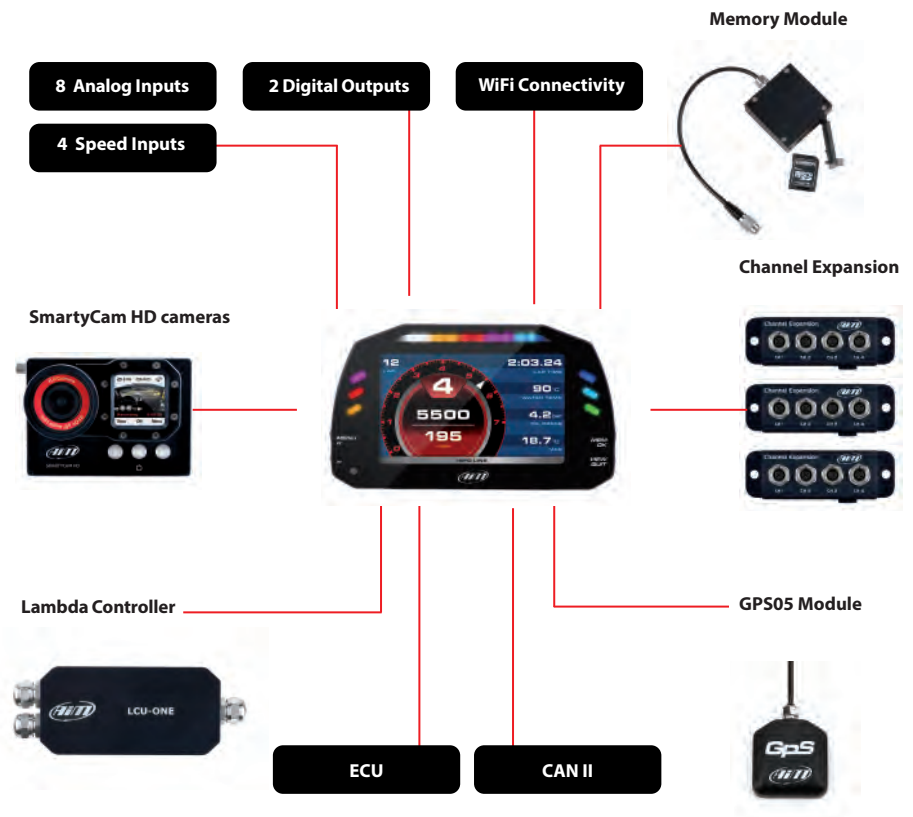
!!! SUZUKI afactbafoh_!S[
; Xa2SUZUKI afactbafoh_
Bz/ ' +f\$) (Z) #
8Z/ ' +f\$) (Z) #+

For Pricing and Inquiries Please Contact:

Achilles Motorsports, Inc.
5636 W. San Madele Ave
Fresno, CA 93722

5636 W. San Madele Ave
Fresno, CA 93722
(559) 231-1111
(559) 231-1111

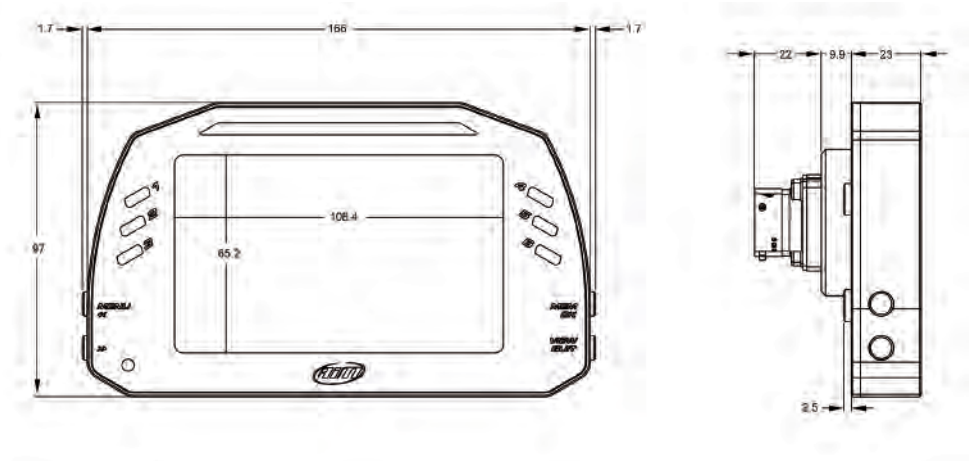
MXS
A Modular Data Acquisition Display
System for your car



Modular Data Acquisition System

Add expansion modules via our built in CAN bus eg. GPS, external memory modules, channel expansions, lambda controllers.

These are only some of the items that can be added to our MXS range for incrementing the performance and the data acquired.



- Display	5" TFT
- Resolution	800x480 pixels
- Contrast	600:1
- Brightness	700cd/m2
- Ambient Light sensor	Yes
- Alarm LEDs	6 RGB freely configurable
- Shift Lights	10 RGB LEDs freely configurable
- CAN connections	3
- ECU connections	CAN, RS232 or K- line
- External modules connection	Yes
- Expansion CAN connection	GPS, Channel expansion, Thermocouples expansions , Lambda Controller, SmartyCam HD
- Analog inputs	8 fully configurable
- Digital inputs	4 Speed inputs, 1 RPM input
- Connectors	2 Motorsport connectors
- Accelerometer + gyroscope	Internal Three-axial $\pm 5G$ +Gyro
- Internal memory	4 GB
- Body	Anodized Aluminum
- Pushbuttons	Metallic
- Dimensions	169,4x97x23mm
- Weight	670g
- Waterproof	IP65

For Pricing and Inquiries Please Contact:

Achilles Motorsports, Inc.
5636 W. San Madele Ave
Fresno, CA 93722

!!! SUZUKI afadbafeLa !S[
; Xa2 SUZUKI afadbafeLa_
BZ/ ' +f(\$) (Z) #'
8Z/ ' +f(\$) (Z) #+

EVO5

The New Data Logger Evolution



AiM introduces the evolution of the datalogger that, all over the years, has become a standard de facto acquisition system in a huge amount of championships.

A compact aluminum body, with two multichannels Motorsports connectors and internal SD closed by a waterproof door. It is so small that you can install it everywhere. And the internal SD card guarantees an unlimited capability to record all your possible data.

The door has a dedicated sensor that lets the system close all the files when you open it, in order to avoid any possible loss of data.

ECU connection to over 500 different ECUs

The ECU connection features all the possible hardware compatibilities (CAN, RS232, OBDII) in order to guarantee the possibility to receive a huge amount of data from all the possible available ECUs, both in motorsports and in stock installations.

Of course, the unit is completely configurable, in order to offer the maximum flexibility.

An extra CAN connection

Many times you wish to get data not only from your ECU but also from other electronic devices you have in your car. The extra CAN is intended to offer this possibility.

2 motorsport connectors

Such a high-level datalogger could not offer cheap, low cost low quality connections.

We have chosen the best motorsport connectors in the market, easy to remove, easy to connect, waterproof and extremely reliable in every condition.

Internal three-axial accelerometer and gyro sensor

A built-in inertial platform lets you have the most powerful system for understanding oversteering, understeering, banking, etc.

Internal SD for data recording

No way to have a faster data downloading: you remove the SD and... it is done! Of course, also USB connection is available, just in case the logger is hidden somewhere.

Expansions

EVO5 is of course freely expandable: you can add GPS05 Module, analog input channel expansions, Lambda controllers and our new powerful SmartyCam HD and GP HD.

Inputs/outputs

8 freely configurable analog inputs (0-5 V, 0-500 mv, thermocouples, thermoresistances) at frequencies from 0.1 to 5000 Hz), 2 speed signal inputs, 1 rpm input and 2 digital outputs let you have all the data you really need for fully understanding the behaviour of your car in every possible condition.



EVO4 The Data Logger



Complete, professional easy to use

EVO4 is a professional, modular datalogger with integrated GPS.

Robust and compact, EVO4 can be easily placed in any vehicle.

Its configuration with RaceStudio3 software is simple and immediate.

Read your sensors in 5 different ways

EVO4 samples all information you need: data coming from the Engine Control Unit (ECU) via CAN, serial line or OBDII, from the internal three-axial accelerometer, from the integrated GPS, which permits an automatic and precise lap time calculation.

Sensors can be connected to 5 configurable analog channels, to the RPM input and to 2 wheel speed inputs.

Expand your System according to your needs

EVO4 is a modular logger, offering the opportunity to increase the number of channels, adding the following items via CAN:

Channel Expansion

It permits to add 4 0-5Volt analog channels.

TC Hub

It adds 4 K thermocouples.

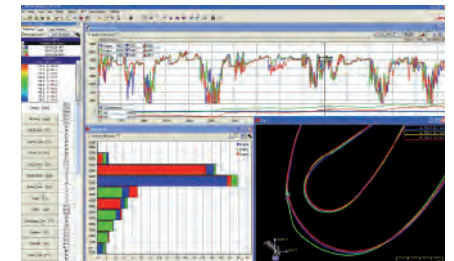
LCU-One Lambda Controller Wide band Lambda controller LCU-One, with Bosch LSU 4.9 probe, providing all Air/Fuel data, lambda value and exhaust gas temperature, allows to perfectly tune the carburetion.

SmartyCam HD

The on-board camera that overlays on videos the data sampled by your logger.

Download data on your PC

Data recorded by EVO4 can be downloaded to PC and analyzed with the professional Race Studio Analysis software: graphs, histograms and tables will help you evaluate your performance, providing an objective support to avoid mistakes and improve your driving technique.



- Body	Anodized Aluminum
- Power supply	9 -15V
- Integrated GPS	Yes
- Integrated GPS triaxial Accelerometer	Yes
- ECU connection	CAN/ RS232/ K Line
- CAN Protocol for external expansion	Yes
- RPM Channel	1
- Analog Channels	5
- Speed Channels	2
- USB Data Download	Yes
- Laptimer Input	Yes (optical and magnetic)
- Sampling frequency	5 KHz max
- Memory	16 Mb
- Dimensions	129x45x30mm
- Weight	240g
- Waterproof	IP67

For Pricing and Inquiries Please Contact:

Achilles Motorsports, Inc.
5636 W. San Madele Ave
Fresno, CA 93722

25

Solo/SoloDL

The GPS Lap Timer for Motorsports

For Pricing and Inquiries Please Contact: **Achilles Motorsports, Inc.**
5636 W. San Madele Ave
Fresno, CA 93722

!!! SUZUKI afadbafe!S
; Xa2 SUZUKI afadbafe!
Bz' ' +f(\$)(Z) #'
8z' ' +f(\$)(Z) #++

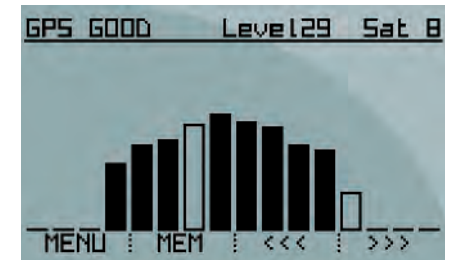


- Automatic Lap time calculation based upon GPS technology
- Wide internal Track Database with more than 200 tracks
- Automatic track recognition at power on
- Freely configurable display

- Freely selectable race Mode: Speed, Performance, Point to Point and Autocross
- Internal 32 megabytes datalogger
- SoloDL: connectable to every ECU for getting and recording all ECU data

Find your track thanks GPS

Thanks to its integrated track database Solo automatically recognizes which track you are racing and determines the starting line position in order to calculate your lap times.



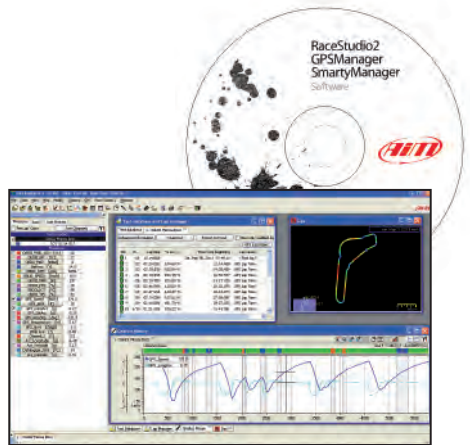
Select your race mode

With a simple keyboard configuration Solo can manage four different forms of motorsports:

- Speed races in a closed circuit
- Point to-point races
- Regularity
- Performance tests

In all of these different situations Solo gives the proper information during the test and powerful data review immediately after each session.





Data recall on screen or on your PC

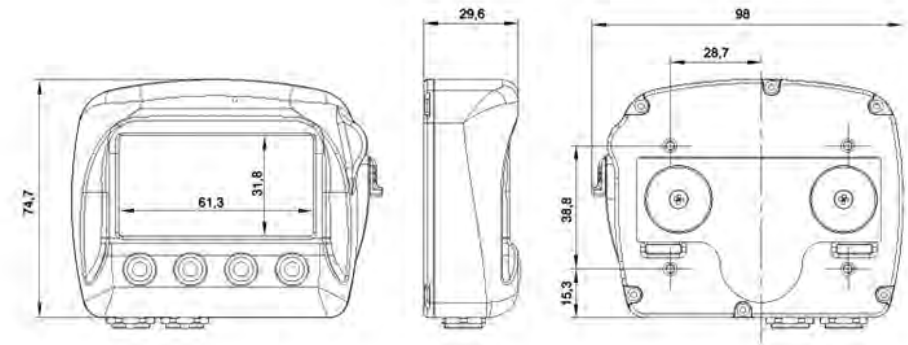
At the end of your test, you can review all the key information on Solo or download them in order to study your performance on your PC.



SoloDL The GPS Lap Timer with ECU connection

SoloDL offers all the functions of Solo, plus the ability to connect to your car's Engine Control Unit (ECU) and to the optional camera, SmartyCam HD: a powerful data acquisition system recording important data - like RPM, throttle position and much more - linked to your position on track.

All this without additional sensors thanks to the ECU connection.



- Display	Graphical
- Display resolution	128x64 pixels
- Display pages	Up to 8 freely configurable
- Backlight	White
- Integrated Track database	Yes
- Accelerometer	Tri-axial $\pm 6G$
- Internal battery	Yes
- Battery type	Rechargeable lithium
- External power	12 V
- Memory	16 Mb
- GPS	10 Hz
- ECU connections (SoloDL)	CAN, K Line, RS232
- Dimensions	98x77,7x29,6 mm
- Weight	240g, battery included
- Waterproof	IP65

For Pricing and Inquiries Please Contact:

Achilles Motorsports, Inc.
5636 W. San Madele Ave
Fresno, CA 93722

29

SmartyCam HD Rev.2

The Videocamera Designed for Motorsports

For Pricing and Inquiries Please Contact:

Achilles Motorsports, Inc.
5636 W. San Madele Ave
Fresno, CA 93722

SmartyCam HD Rev.2
is a high quality video camera
designed for motorsports
with a single purpose: providing
great videos that include all the
technical information that will
help you improve your performance.



Narrow HFOV lens



Wide HFOV lens

SmartyCam HD Rev.2 has been designed for motorsports with a single purpose: providing great videos that include all the technical information that will help you improve your performance. All this in the

most robust and reliable system ever. In its new version, the electronics/mechanics have been further improved, and SmartyCam HD is now even easier to manage.

Competitive Advantages

Real time data overlaid on videos

Automatic Start&Stop

No Wave effect with Global Shutter CMOS Sensor

Proprietary lenses designed for motorsport

Front mount color TFT display

High Quality small-size video files

Extreme on track working conditions

Compact handy and easy to install

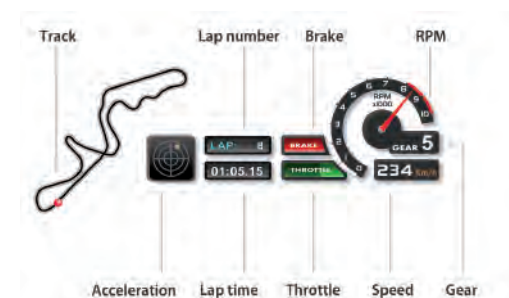
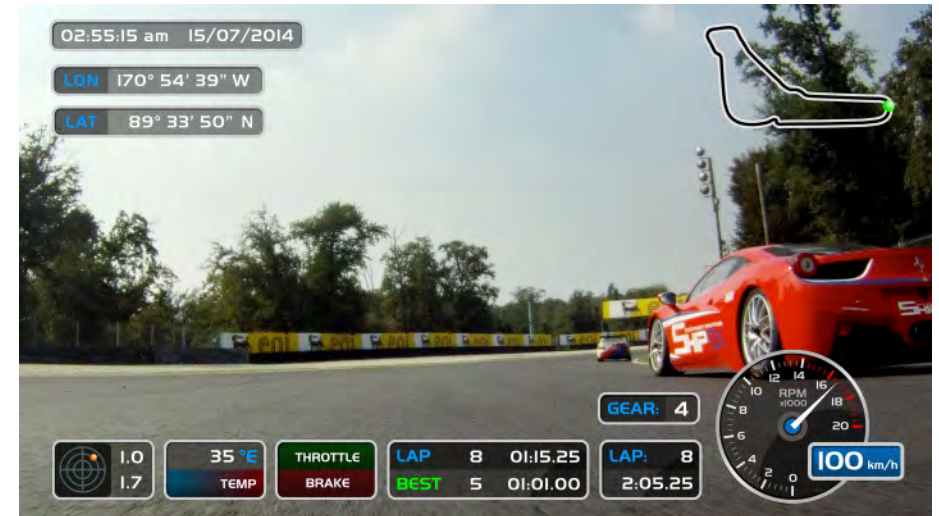
Real Time Data Overlaid on Videos

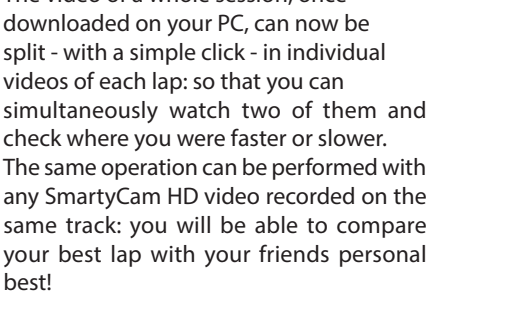
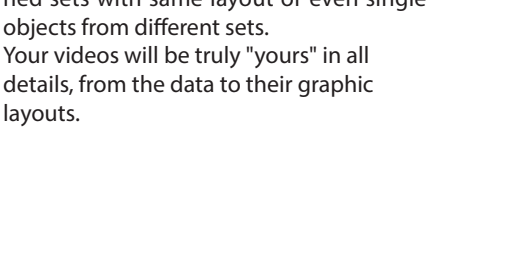
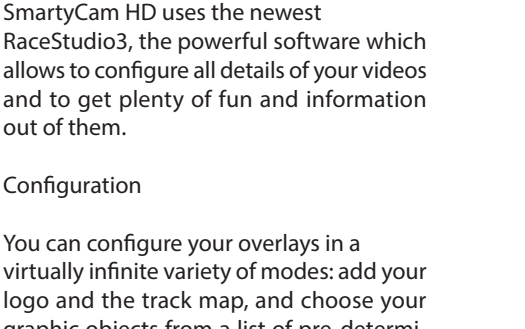
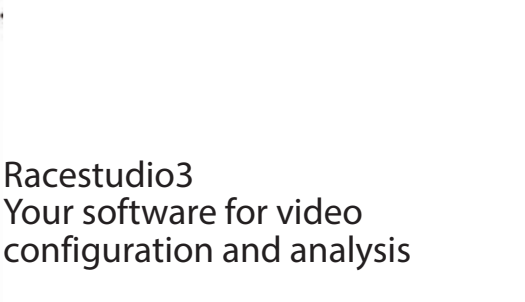
SmartyCam HD Rev.2 overlays all the data you need from different sources.

From GPS: track map and vehicle position, as well as speed, lap and split times.

From AiM loggers connected to your ECU: RPM, throttle, engaged gear, acceleration, temperatures, pressures and - in presence of additional sensors - also their values.

All these info will be overlaid on videos in each single point of the track.





Never again will you experience that seasick "wave effect" you get when watching videos recorded by a generic camera, when the car rolls at 7000 RPM.

"Wave effect" is just a memory.



The video of a whole session, once

downloaded on your PC, can now be split - with a simple click - in individual videos of each lap: so that you can simultaneously watch two of them and check where you were faster or slower. The same operation can be performed with any SmartyCam HD video recorded on the same track: you will be able to compare your best lap with your friends personal best!

Moreover, the authors of the study suggest that the results of the study may be generalizable to other populations, but this needs to be confirmed in future research.

You have other things to worry about.
SmartyCam HD is aware of that.
That is why it switches on/off automatically
and starts/stops recording the same way.

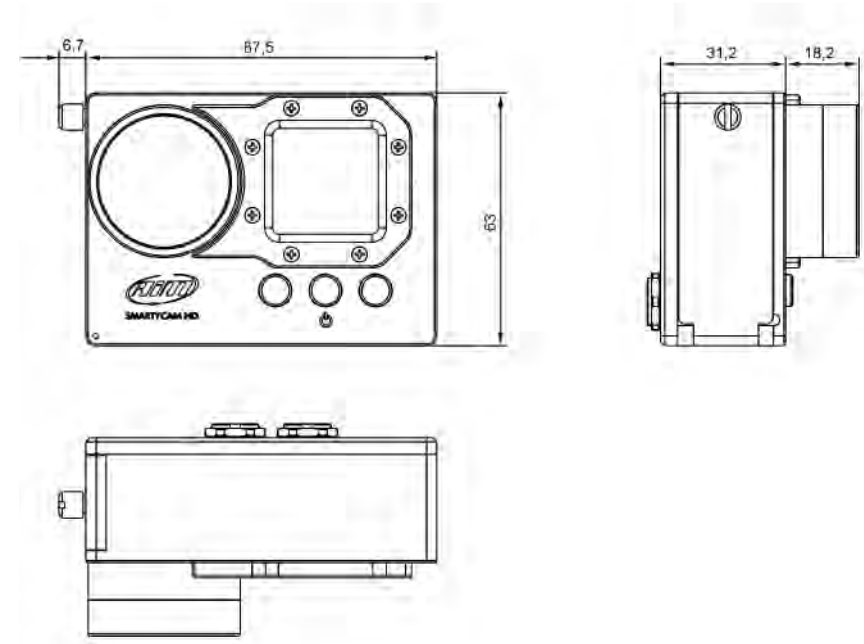


Designed to withstand extreme on-track working conditions

Frail things have a bad time on track.

An on-board camera designed for motor-sports must guarantee great resistance against the extreme working conditions typical of racing and against the most adverse weather, such as: strong and prolonged vibrations, storms, continuous rain, and extremely high and low temperatures.

That is why SmartyCam HD is made in machinery molded aluminum, just like many competition car parts.



Hight quality with small size video files



Generic HD cameras are focused on the highest pixel number. The result is that their video files are far too large, taking too much memory. SmartyCam HD videos have the same quality as other HD cameras but their files are smaller because the H264 compression system parameters have been optimized to a perfect balance between video quality and file size.

You can choose among three video file quality levels: one-hour recording takes 4GB (high quality), 2GB (normal) or 1,5GB (low).

Files are stored on SD cards: with current SD cards reaching 128GB capacity, you can record more than 30 hours of high-quality videos without changing the card.

- Video format	H.264 1280x720 pixel @ 30fps 1,5-4Gb/hour
- Field of view	60°- 120°
- Lens	Telecentric with 6 elements
- Supported SD card	Up to 128 Gb
- Display	Frontal 128x128 pixel
- Accelerometer	Three-axial ± 5G
- Internal battery	Rechargeable Lithium battery 1.040 mAh
- Battery charge	700 mAh 12V
- Internal battery duration	70 - 80 min. of recording
- External power	9 -15 Volt
- Auto Power On/Off	Yes, if connected to an AiM logger
- Auto Power Off	Yes
- Auto Start/Stop Recording	Yes
- Usage temperature	-10°C / + 60°C
- Body	Anodized Aluminum

- Dimensions	87,5x63x49,1mm
- Weight	250g battery included
- Waterproof	IP67

For Pricing and Inquiries Please Contact:

Achilles Motorsports, Inc.
5636 W. San Madele Ave
Fresno, CA 93722

SmartyCam HD Rev.2
128GB SD card
H.264 1280x720 pixel @ 30fps
1,5-4Gb/hour

SmartyCam GP HD

The Videocamera Bullet Version



Same video quality, same connections to Master Loggers, same features but a completely different look. It is in black anodized aluminum, billet machined with a light, robust, and really small Bullet-Camera.

SmartyCam GP HD is very flexible: you can add optional modules to fit it perfectly to your needs, like the ECU Bridge to connect it directly to the Engine Control Unit, the GPS, or the external microphone/jack.

The professional on-board camera with data overlay with remote bullet-cam.

If you have a formula car, or a bike, or in every situation in which SmartyCam is not so comfortable to install, here is the version with remotd bullet-cam, SmartyCam GP HD.

- Video format	H.264 -1280 x 720 pixel @ 30fps 1,5-4Gb/hour
- Field of view	60° or 120°
- Lens	Telecentric with 6 elements
- Supported SD card	Up to 128 Gb
- Display	2,4" 240x320 pixel
- Accelerometer	Three-axial ± 5G
- Internal battery	Rechargeable Lithium battery 1.040 mAh
- Battery charge	700 mAh 12V
- Internal battery duration	60 - 70 min. of recording
- External power	9 -15 Volt
- Auto Power On/Off	Yes, if connected to an AiM logger
- Auto Power Off	Yes
- Auto Start/Stop Recording	Yes
- Usage temperature	-10°C / + 60°C
- Body	Anodized Aluminum
- Dimensions	Main box 102.5x65.2x26,5mm Bullet camera diam 24mm x 73,5mm
- Bullet cable	0,5 - 1,0 - 1,5 - 2,0 mt
- Weight	Main box 260g - Bullet camera 55g
- Waterproof	IP67

For Pricing and Inquiries Please Contact:

Achilles Motorsports, Inc.
5636 W. San Madele Ave
Fresno, CA 93722

SmartyCam GP HD
SmartyCam GP HD
SmartyCam GP HD
SmartyCam GP HD

G-Dash

The new Digital Display
for EVO DataLoggers



The best compact digital display

G-Dash is the new AiM graphical display, developed to be connected to our EVO DataLoggers.

Totally in aluminum, with edge to edge glass and metallic pushbuttons is fully waterproof and extremely elegant and robust.

It is small, compact, extremely flexible thanks to its graphical display and to the possibility to configure as many pages you wish, each one of them can show from one to four data, in according to your requirements.



Configuration can be managed by PC or directly on the system: you can add, remove or modify pages or information per every page.

Six freely configurable RGB shift lights and four freely configurable RGB alarm LEDs give clear information about the status of your car.

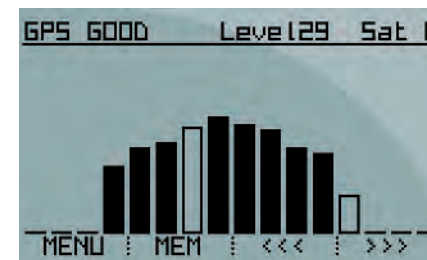
G-Dash receives and shows information also about expansion modules, like to say GPS receiver or our new SmartyCam HD.

All your data in a glance

A small, flexible, fully configurable graphical display, showing the data sampled by EVO dataloggers with a precise and enjoyable visualization.

With G-Dash you keep constantly under

control lap times and all values coming from the ECU, from the accelerometers and from the GPS built in EVO dataloggers, besides receiving information from the on-board camera SmartyCam HD.



For Pricing and Inquiries Please Contact:

Achilles Motorsports, Inc.
5636 W. San Madele Ave
Fresno, CA 93722

i i i SUZ[~W_ afacbafoh_ !S[
; Xa2SUZ[~W_ afacbafoh_
Bz/ ' +fi\$) (Z) #'
8z/ ' +fi\$) (Z) #+

For Pricing and Inquiries Please Contact:

Achilles Motorsports, Inc.
5636 W. San Madele Ave
Fresno, CA 93722

iiiiSUZ[~W_ afadbbadfa_!S_
;~a2SUZ[~W_ afadbbadfa_
BZ/ ' +f(\$)(Z) #'
8Z/ ' +f(\$)(Z) #+

Up to 9 pages showing the data you wish as you wish

G-Dash swaps among pages showing lap times and data in a 100% customizable way: just choose your data and create your pages displaying up to 4 fields each.

The "RPM and Lap Time" page layout is also available to display RPM Graph, Lap Time and two channels of your choice.

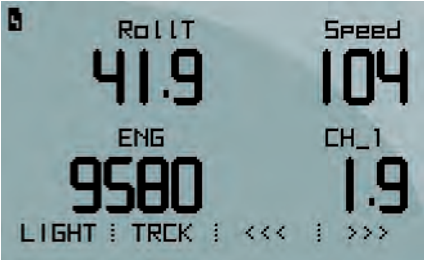
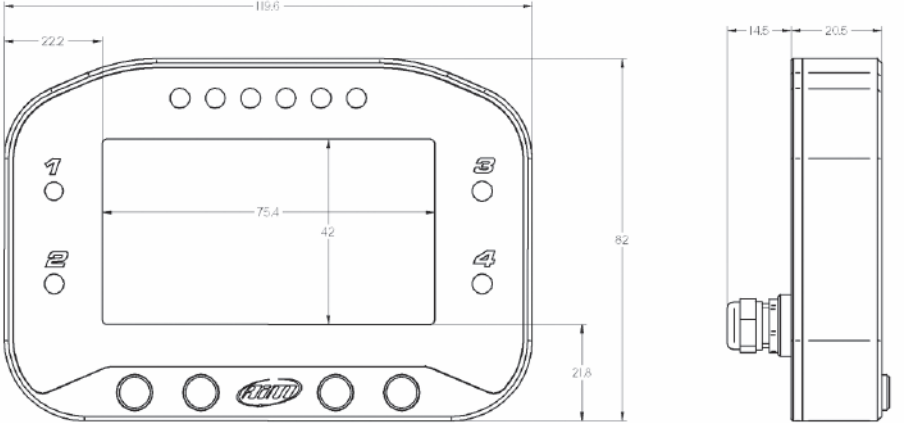
Lap times
You can visualize the rolling time, or static or predictive lap time (as an absolute value or as a difference vs. the Best Lap).

Configure your LEDs one by one

Six RGB shift lights can be configured for each gear, choosing LED color and RPM threshold values which will turn it on/off.

Alarms are managed in a very flexible way: you can choose the situation that generates the alarm, the LED behavior (blinking frequency and color) when the alarm appears and the conditions for its switch-off.

A warning message can also be shown.



- Display resolution	Graphical
- Alarm LEDs	4 RGB freely configurable
- Shift Lights	6 RGB freely configurable
- Display Pages	Up to 8 freely configurable
- Backlight	White
- Body	Anodized Aluminum
- Pushbuttons	Metallic
- Dimensions	119,6x82x20,5mm
- Weight	350g battery included
- Waterproof	IP67

Formula Steering Wheel



Formula Steering Wheel, for dimensions (270mm) and structure, has been specifically designed for Formula and Sport cars.

It offers the opportunity to visualize in real time all key parameters and shows a typical "racing" look.
Formula Steering Wheel is robust, for its

anodized aluminum chassis, comfortable and ergonomic: maximum grip is guaranteed by its shape and its finishing with hand-sewn shammy leather.

Reliable: with its backlit display and waterproof structure it can be used in all conditions of light and weather.

Its digital display shows data sampled by EVO4 logger, coming from Engine Control Unit and sensors.
With Formula Steering Wheel you keep constantly monitored:

- Lap/split times and lap number
- Speed or RPM graphical view
- 8 channels (2 per page) selected configuring EVO4 with Race Studio2 software.

Formula Steering Wheel also displays:

- 4 alarm leds, associated to the desired channels
- Configurable shift lights

It also features switch buttons to remote 4 functions among the options available in your car, like speed limiter, traction control, neutral, etc.

You can also visualize GPS signal strength and - if the circuit is not included in the tracklist - to fix finish-line and split points.

- Display	Graphical
- Alarms LEDs	4 RGB freely configurable
- Shift Lights	5 RGB freely configurable
- Display pages	Up to 8 freely configurable
- BackLight	White
- Display Pushbuttons	4
- User Pushbuttons	4
- Chassis	Anodized Aluminum
- Finishing	Hand-sewn shammy leather
- Paddleshift SX-DX	Optional
- Dimensions	270x184x48 mm
- Weight	1.400g
- Waterproof	IP65



For Pricing and Inquiries Please Contact:

Achilles Motorsports, Inc.
5636 W. San Madele Ave
Fresno, CA 93722

```
i i i ZUZ[^\w_!@#%&*~_!S[
; %2SUZ[^\w_!@#%&*~_!S[
BZ/ ' +fi$) (Z) #'
8Z/ ' +fi$) (Z) #+
```


GT320 - 350 Steering Wheel

For GT and Touring Cars



- Diameter 320 or 350 mm
 - SPA or OMP hub compatible
 - Different leather available
- Optional Paddleshifts
 - 4 pushbuttons for external commands
 - Connectable to AiM EVO dataloggers or ECU Bridge



GT 320



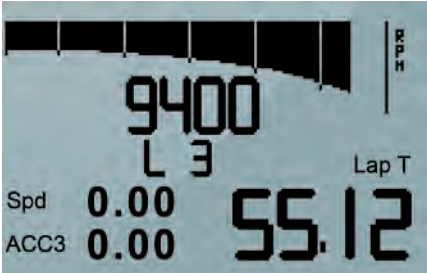
GT 350

Available in different models

GT Steering Wheel is available in 320mm or 350mm diameter, and can be outfitted with paddle shifts (optional).

It is supplied with a specific flange to allow perfect installation on both SPA and OMP hubs.





Up to nine, fully configurable pages

Lap times and data are shown in successive pages in a user-defined way: simply select the data you want to monitor and create custom pages that can show up to four fields each.



Fully configurable LEDs

Melding form and functions, an integrated shift light array crowns the wheel behind a carbon fiber foreground.

Ten shift lights can be configured choosing the LED colour and the RPM threshold value that will switch them on/off. Alarm management is very flexible too: you can choose which situation will activate the alarm and each LED behavior, as well as the conditions for its switch-off.

- Display	Graphical
- Alarms LEDs	4 RGB freely configurable
- Shift Lights	10 RGB freely configurable
- Display pages	Up to 8 freely configurable
- BackLight	White
- Display Pushbuttons	4
- User Pushbuttons	4
- Chassis	Carbon Fiber
- Finishing	Carbon Fiber/Leather
- Paddleshift SX-DX	Optional
- Diameter	320-350 mm
- Weight	320/1,700g - 350/1,800g
- Waterproof	IP67



GPS05 GPS Module



A real breakthrough in data analysis

GPS technology represents a true revolution in data acquisition.

Thanks to GPS05 Module and its GPS Manager software, you can immediately get laptimes and all data needed for engine tuning as well as for improving driving technique.

GPS05 Module is fast in satellite signal acquisition and reliable in adverse situations: it includes in a single unit both receiver and antenna, for immediate installation. Lightweight and waterproof, GPS05 Module is connectable to AiM loggers via CAN cable.

GPS Manager allows to set track start/finish lines and splits and to download a



comprehensive track database. GPS05 Module connected to AiM loggers delivers many important information, i.e. chassis analysis, track position, etc. Thanks to GPS05 Module you'll get: Position, Speed, Cornering in-line and lateral G, automatic lap times.

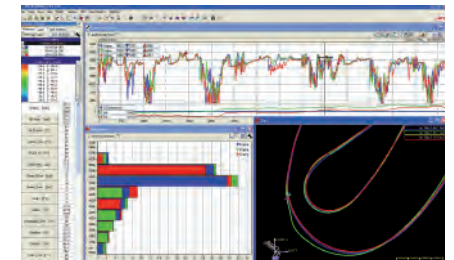
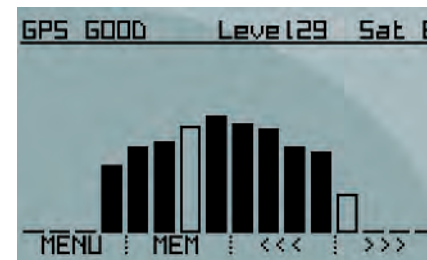


GPS05 Module

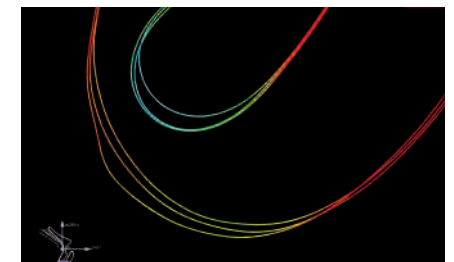
GPS05 Module and AiM logger, perfect sinergy

GPS05 module connected to an AiM logger allows you to monitor your position and speed at any point of the track.

Now it is possible to start running and immediately get laptimes without any previous operation, leaving old systems out: neither infrared or magnetic beacons nor track inspections before tests.



You can review your driving performance through real images, exporting all these data into Google Earth®.



For Pricing and Inquiries Please Contact:

Achilles Motorsports, Inc.
5636 W. San Madele Ave
Fresno, CA 93722

i i i SUZ[~W_ afadbafeLa_ !S_
;`Xa2SUZ[~W_ afadbafeLa_
Bz/ ' +f(\$) (Z) #'
8z/ ' +f(\$) (Z) #+

LCU-One Lambda Controller

For Pricing and Inquiries Please Contact:

Achilles Motorsports, Inc.
5636 W. San Madele Ave
Fresno, CA 93722

LCU-One afadbafe1a_!S_
2SLU[~W_ afadbafe1a_
BZ/ ' +f\$) (Z) #'
8Z/ ' +f\$) (Z) #++

Three variants for all your needs

LCU-One range is available in three different versions:

LCU-One CAN

Uses a CAN bus and is extremely easy to install.

LCU-One Analog

Uses a serial line for programming and an analog output proportional to lambda value.

To be even more user-friendly, these two versions of LCU-One switch on/off together with the logger.

LCU-One CAN + Analog

Is equipped with both CAN bus and analog output.

All the data you need at your fingertips

LCU-One CAN

CAN connection

The product configures Stoichiometric point and provides:

Lambda value and Air/Fuel ratio
Lambda probe temperature and diagnosis

LCU-One Analog

The product provides Lambda value and Air/Fuel ratio and - thanks to the dedicated Lambda Configurator software, LCU-One Analog allows to configure:

Stoichiometric point
Analog output (0-5 Volt)

LCU-One CAN + Analog

The product configures:

CAN connection+ Analog output
Stoichiometric point

LCU-One CAN + Analog also provides:

Lambda value and Air/Fuel ratio
Lambda probe temperature and diagnosis

Dimensions: 109,4x39x20,6mm

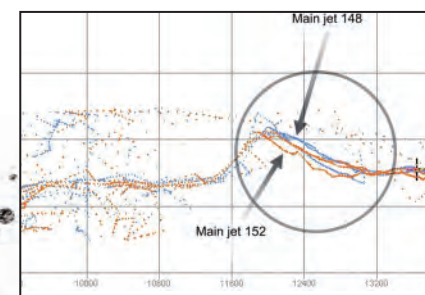
Weight: 120 g

Waterproof: IP65

All LCU-One lambda controllers use a wide band Bosch LSU 4.9 probe either for its capacity of saving the original calibration for its all life and for its duration: Bosch LSU 4.9 probe, in fact, has been designed to last for more than 100.000 km on a stock car.

LCU-One's can detect punctual Lambda value from 0.65 to 1.6, offering you an extremely precise measurement, very useful for engine tuning.

Through the analysis of the remaining oxygen, LCU-One points out possible oxygen excess/lack in the carburetion, providing an essential information for 4 strokes engines: configurability of Stoichiometric ratio allows LCU-One to be used on petrol powered engines as well as on diesel or on alternative fuel (bio fuel, ethanol) powered ones.



Full control of your engine

LCU-One Lambda controller range of products allow you to perfectly tune the carburetion of your engine as well as keep it at its best, appreciably improving your car performances.

Memory Module

Manages SD Cards up to 128 Gb



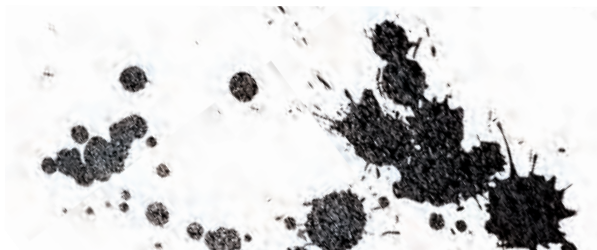
Forget the slow data downloading thanks to this new small add-on:

Memory Module manages an SD memory in order to record all the data of your test in a file that can be easily and quickly moved to your PC for further analysis.

The available memory is much more you will ever need: up to 128 Gb.

Memory Module can be connected through CAN bus to all AiM Loggers (EVO4, EVO5, MXL, MXL2, MXG, MXS).

Dimensions: 55,5x78,3x18mm
Weight: 100 g
Waterproof: IP65



Channel Expansion

CAN Device



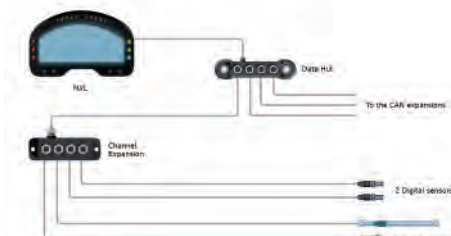
Enhance your logger performance

This compact CAN device provides virtually endless data acquisition system expansion options.

Channel Expansion hub adds up to four freely configurable analog (or two digital and two analog) channels without occupying or modifying any of the existing system channels.

By using advanced CAN technology, wiring is simplified from four cables into just a single connection, thereby reducing possible and unnecessary points of failure. It is also possible - via Data Hub - to connect to the Master as many Channel Expansion as needed.

Its aluminium chassis makes it resistant and waterproof.



Dimensions: 105x33x28,4mm
Weight: 170 g
Waterproof: IP65

ECU Bridge / RPM Bridge

The easiest way to show engine data on visors and SmartyCam videos



Engine Data Bridges

ECU Bridge and RPM Bridge: these two systems are needed whenever engine data are to be visualized on a display or on a SmartyCam HD video, if no recording is required.

They are compatible with MXL Dash, G-Dash and Formula/GT Steering Wheels, and of course with the SmartyCam HD and SmartyCam GP HD.

ECU Bridge is to be used in case the Engine Control Unit transmits data in the following hardware protocols: OBDII, CAN or RS232.

AiM has developed hundreds of different protocols, to make compatibility with virtually all ECUs possible, either stock and after market ECUs.

Dimensions: 123x30x23mm
Weight: 150 g
Waterproof: IP65

For Pricing and Inquiries Please Contact:

Achilles Motorsports, Inc.
5636 W. San Madele Ave
Fresno, CA 93722



ECU Bridge has to be properly configured with Race Studio 2 software to communicate with the different visors/cameras on one side and ECUs on the other side.

ECU Bridge is available in two variants:

With OBDII connector, for immediate plug&play connection to the OBDII port of cars with stock ECUs.

With CAN/RS232 connection, for direct installation on aftermarket ECUs.

RPM Bridge is to be used whenever the car has got no ECU (i.e. classic cars). In this case RPM data can be obtained with connection to the coil or reading a square wave signal generated by the ignition system.

Dimensions: 123x30x23mm
Weight: 150 g
Waterproof: IP65

ECU Bridge RPM Bridge



TC Hub Thermocouples Multiplier



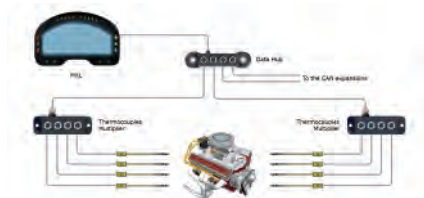
Keep all temperatures
of your engine under control

TC Hub allows you to connect via CAN bus four additional thermocouples to AiM loggers: you can of course use more TC Hubs to have all desired temperature sensors at your disposal.

With TC Hub you can keep regularly under control exhaust gas temperature of each cylinder in addition to water, oil and head temperatures.

Moreover, thanks to TC Hub, wires overall is reduced to the minimum. Its aluminum chassis makes it resistant and waterproof.

Dimensions: 105x33x28,4mm
Weight: 170 g
Waterproof: IP65



See You On the Track.



For Pricing and Inquiries Please Contact:

Achilles Motorsports, Inc.
5636 W. San Madele Ave
Fresno, CA 93722

111 502.222.2222
; 502.222.2222
Bz/ ' +f15) (Z) #
8z/ ' +f15) (Z) #+



For Pricing and Inquiries Please Contact:

Achilles Motorsports, Inc.

5636 W. San Madele Ave

Fresno, CA 93722

info@achillesmotorsports.com

P. (559)276-5715

F. (559)276-5719

www.achillesmotorsports.com/aim